



OP 1480

This plan is both economical and practical. Featuring 3 bedrooms on the main floor, it can fit the whole family on one level.

The Great Room concept leaves plenty of room for entertaining and daily living. A large Rec and Games Room downstairs along with 2 more bedrooms and plenty of storage, this plan is has it all!

Add a suspended slab for an additional 432 sq. ft of space.

Spec Overview

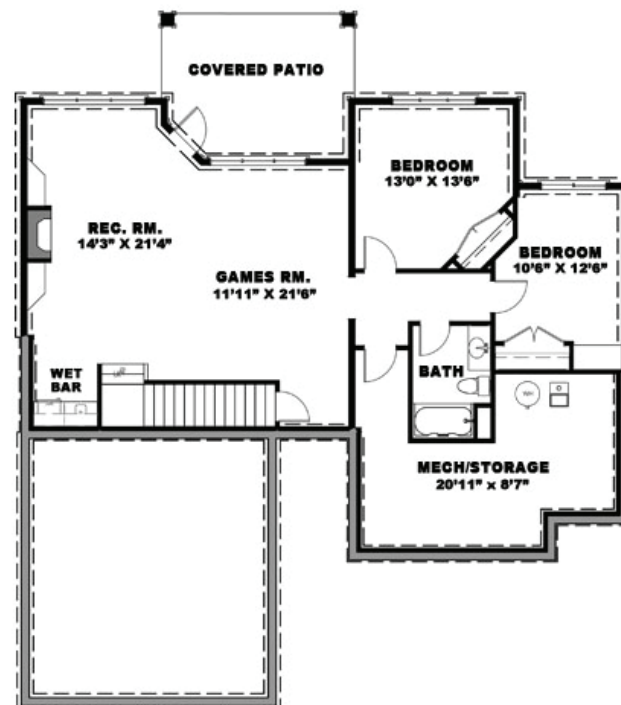
Main	1480 sq.ft
Basement (opt.)	1103 sq.ft
Garage	432 sq.ft
Suspended Slab (opt.)	432 sq.ft

5 Beds 3 Baths

Width 50' Depth 50'

Greg Vinton 250.979.8359
greg@opbuilders.ca

Lower Level



Main Level

