



OP 1710

This plan is great for narrow, but deep lots. It features a large Great Room, Kitchen, Dining Area.

With 5 bedrooms in total (3 on main) there is more than enough room for both family and guests. A Master Suite featuring a 5 piece ensuite and access to the deck. A large Mud Room accessed from the garage, with a completely separate laundry and pantry round off this well thought out plan.

Add a suspended slab for an additional 440 sq. ft of space.

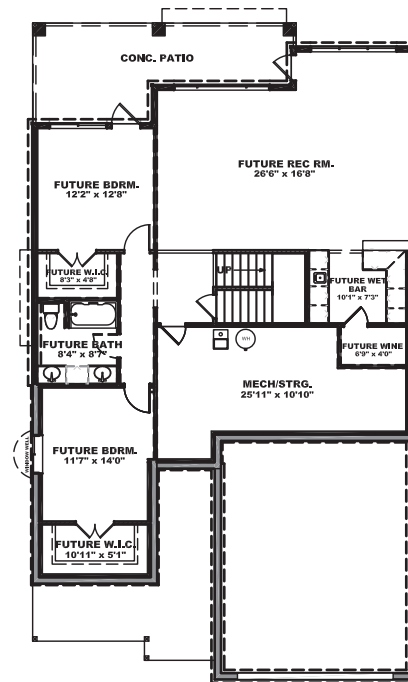
Spec Overview

Main	1710 sq.ft
Basement (opt.)	1320 sq.ft
Garage	490 sq.ft
Suspended Slab (opt.)	490 sq.ft

5 Beds 3 Baths
Width 40' Depth 68'



Lower Level



Main Level

